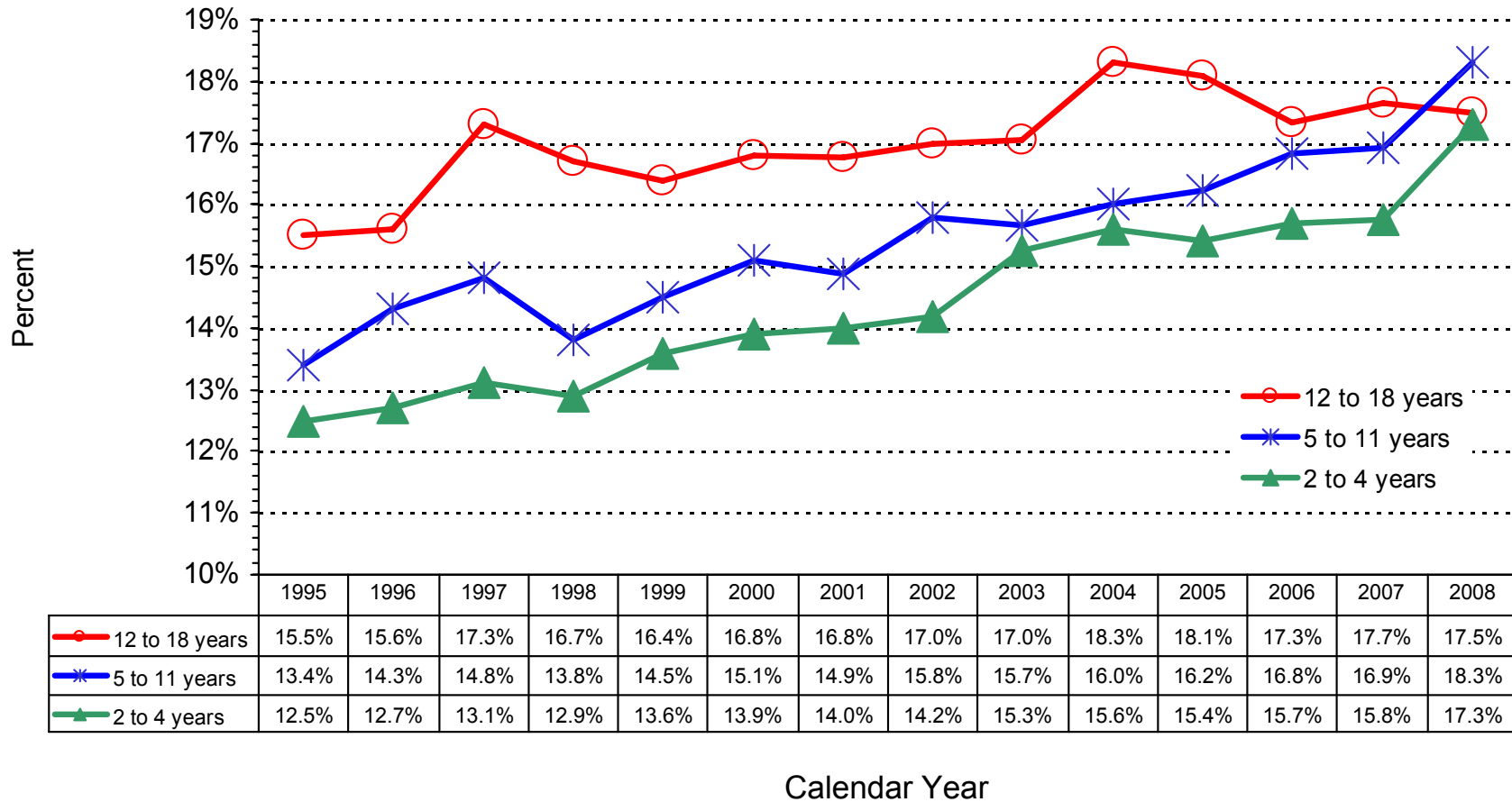


Percentage of Children for Overweight¹ by Age Group and Year (1995 - 2008)

Source: North Carolina-NPASS 2008²

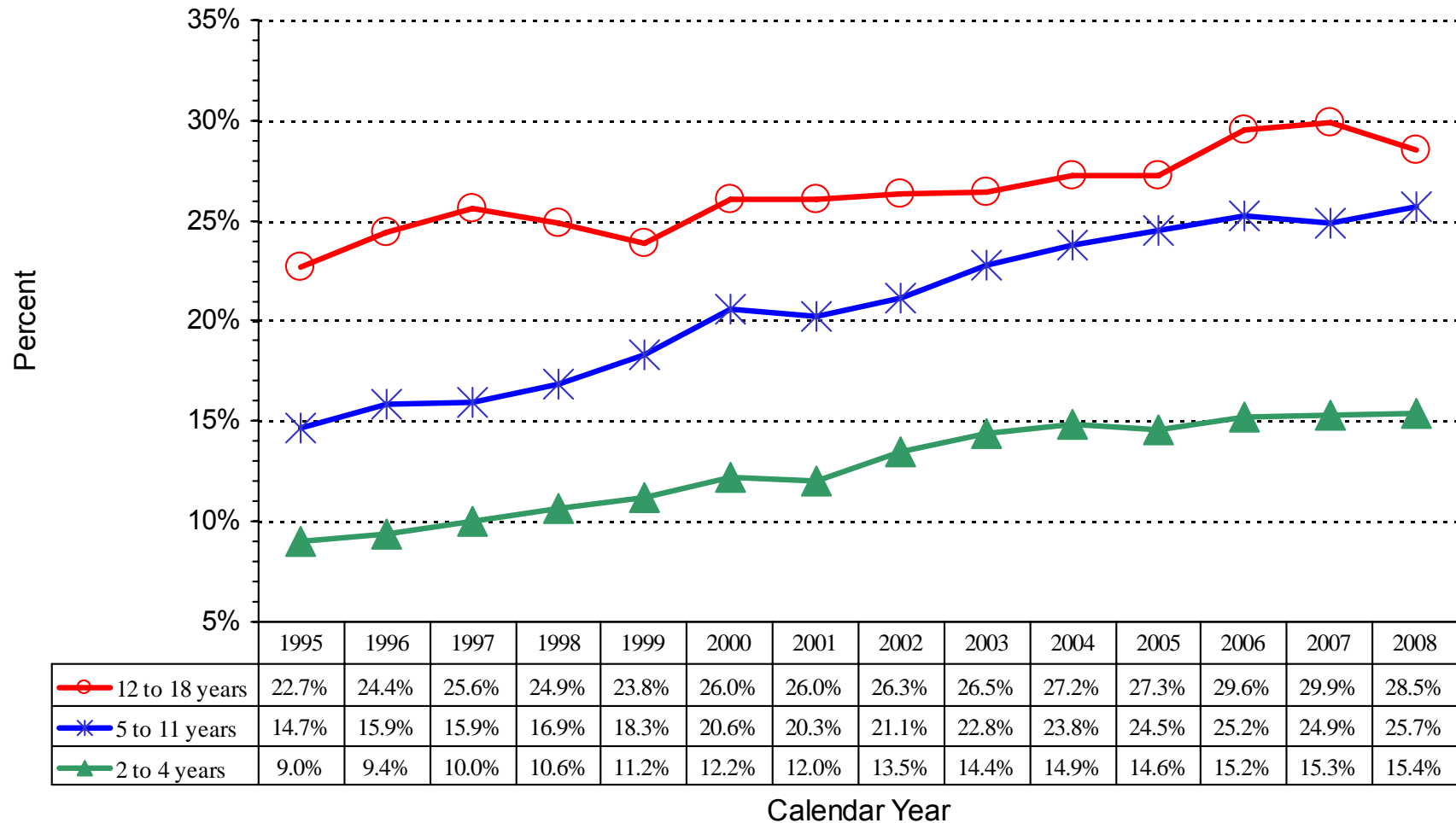


(1) BMI-for-Age Percentiles ≥ 85 th and < 95 th Percentile

(2) North Carolina-Nutrition and Physical Activity Surveillance System (NC-NPASS) is limited to data on children seen in North Carolina Public Health Sponsored WIC and Child Health Clinics and some School Based Health Centers. Percentiles were based on the CDC/NCHS Year 2000 Body Mass Index (BMI) Reference.

Percentage of Obese¹ Children by Age Group by Year (1995 - 2008)

Source: North Carolina-NPASS 2008²

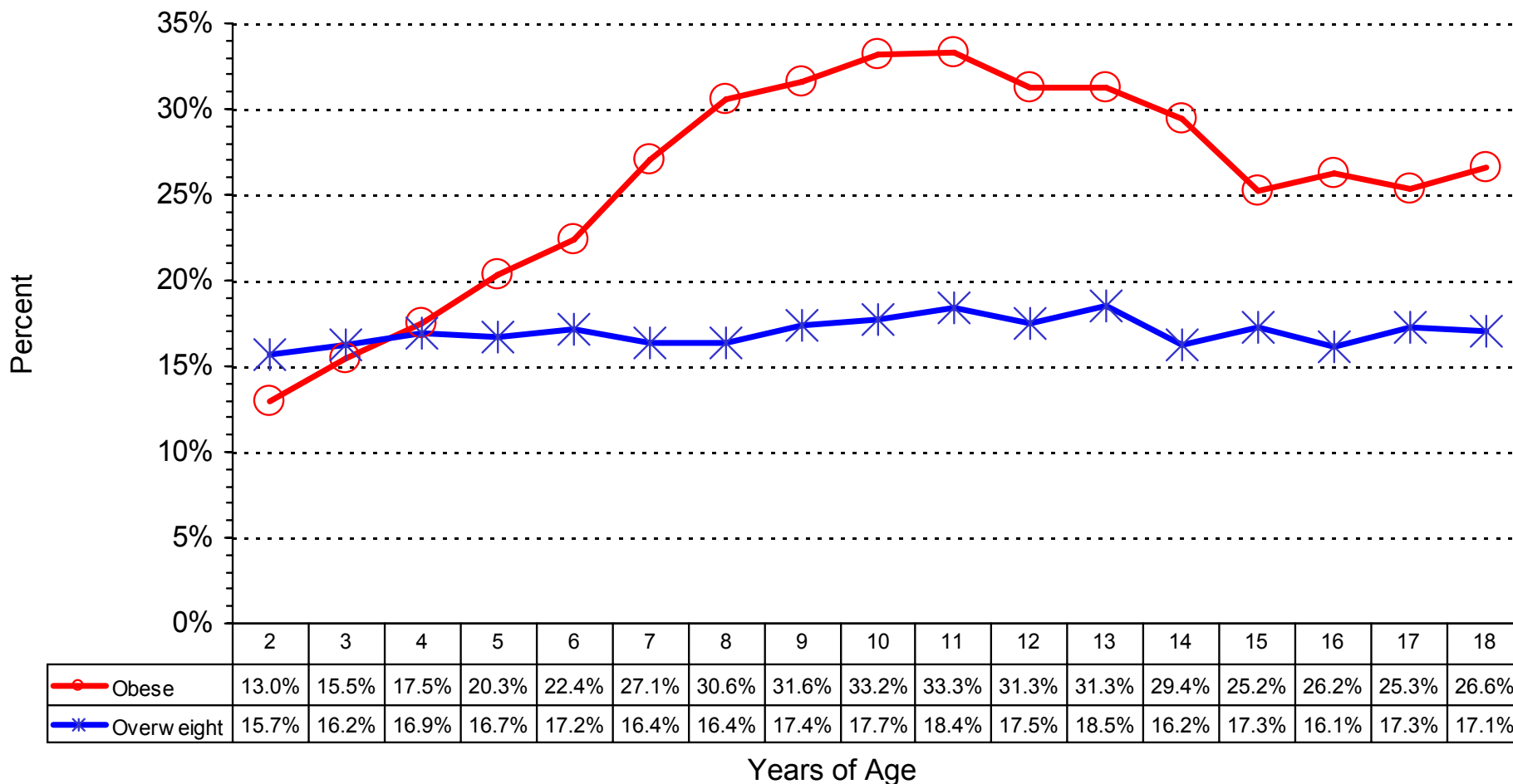


(1) BMI-for-Age Percentiles ≥ 95 th Percentile

(2) North Carolina-Nutrition and Physical Activity Surveillance System (NC-NPASS) is limited to data on children seen in North Carolina Public Health Sponsored WIC and Child Health Clinics and some School Based Health Centers. Percentiles were based on the CDC/NCHS Year 2000 Body Mass Index (BMI) Reference.

Percentage of Overweight¹ and Obese² Children in 2008 by Age

Source: North Carolina-NPASS 2008³



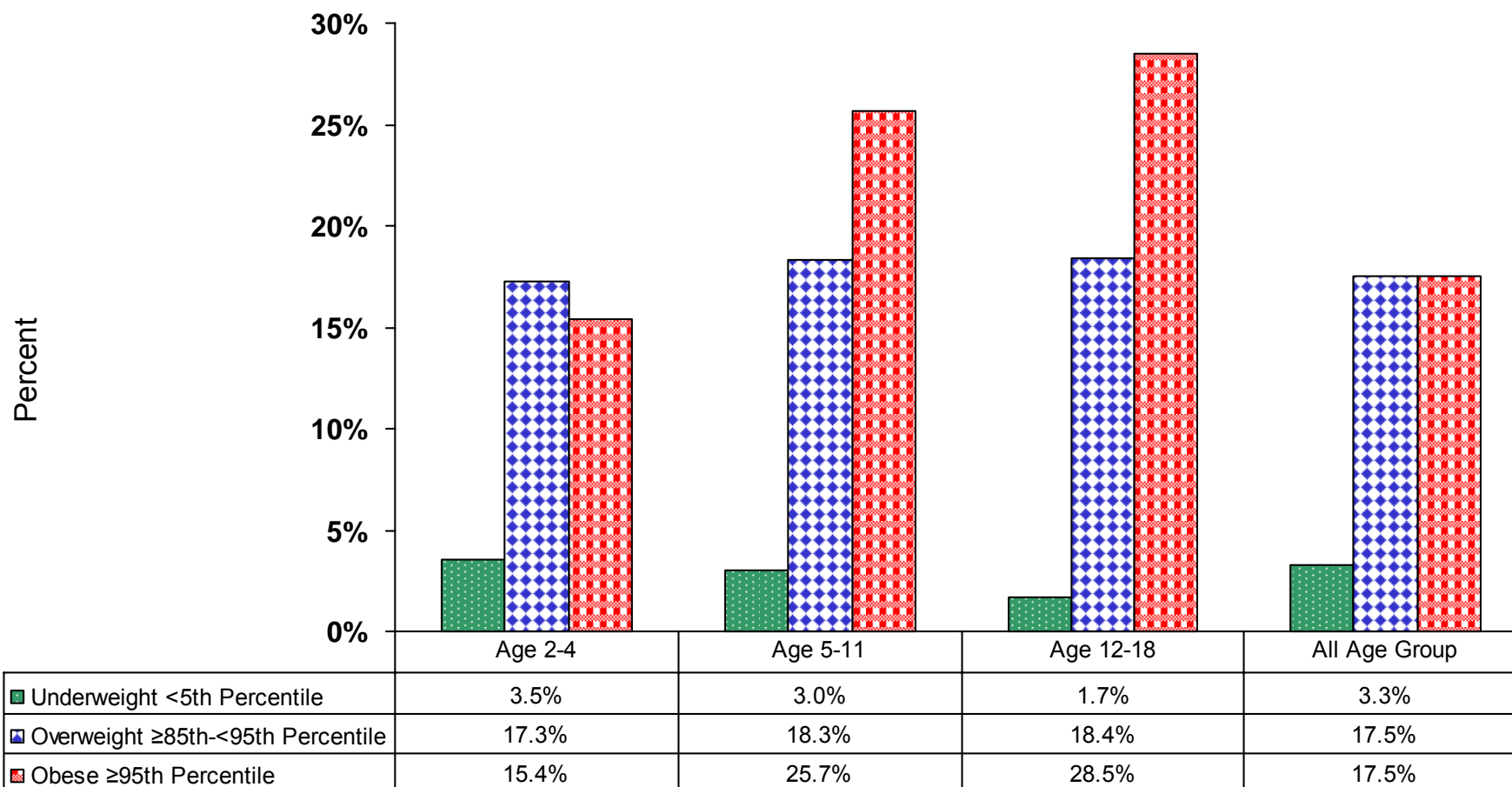
(1) BMI-for-Age Percentiles ≥ 85 th and < 95 th Percentile

(2) BMI-for-Age Percentiles ≥ 95 th Percentile

(3) North Carolina-Nutrition and Physical Activity Surveillance System (NC-NPASS) is limited to data on children seen in North Carolina Public Health Sponsored WIC and Child Health Clinics and some School Based Health Centers. Percentiles were based on the CDC/NCHS Year 2000 Body Mass Index (BMI) Reference.

Percentage of Underweight,¹ Overweight² and Obese³ Children in 2008 by Age Group

Source: North Carolina-NPASS 2008⁴



(1) BMI-for-Age Percentiles <5th Percentile

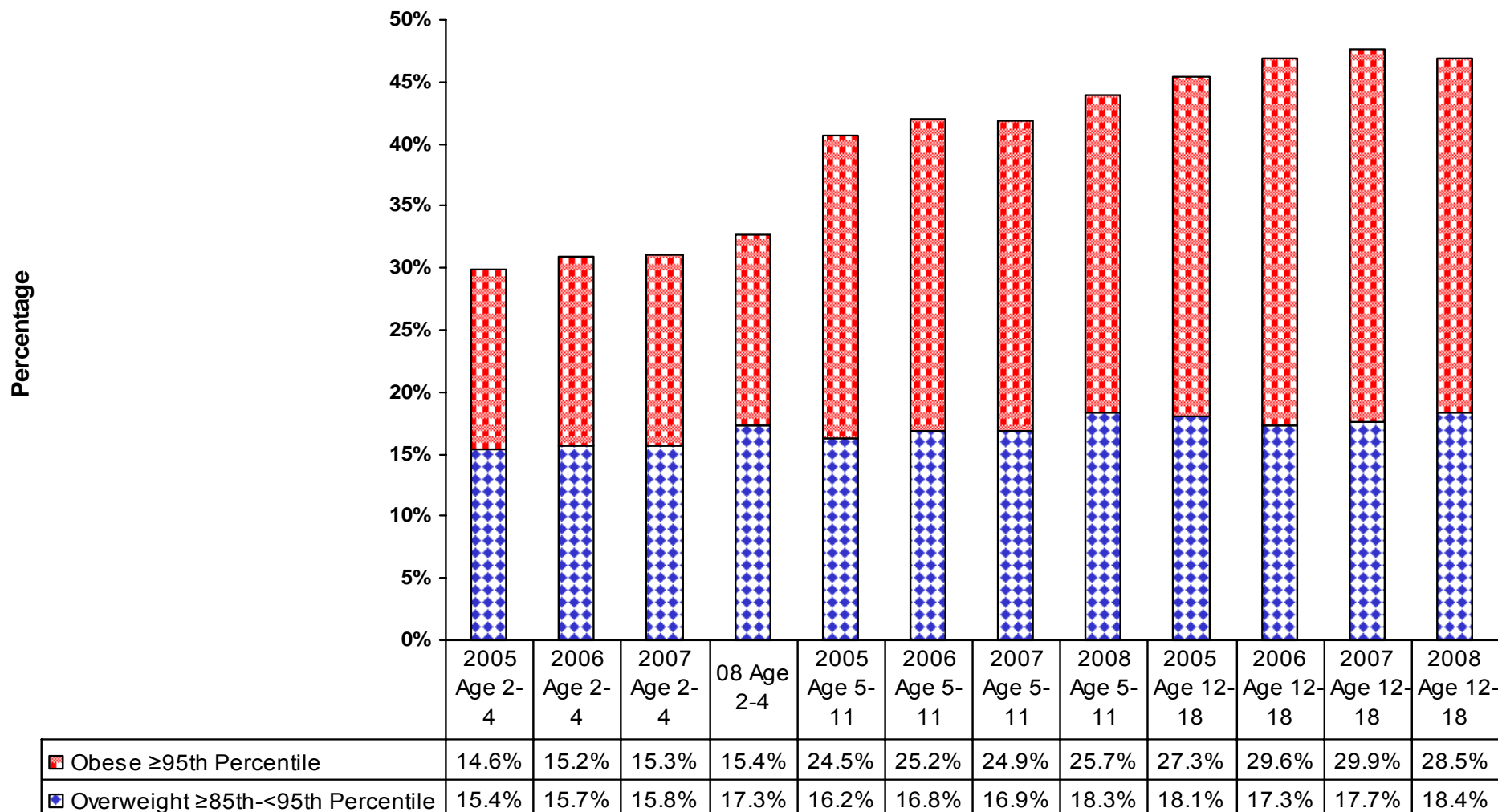
(2) BMI-for-Age Percentiles ≥85th and <95th Percentile

(3) BMI-for-Age Percentiles ≥95th Percentile

(4) North Carolina-Nutrition and Physical Activity Surveillance System (NC-NPASS) is limited to data on children seen in North Carolina Public Health Sponsored WIC and Child Health Clinics and some School Based Health Centers. Percentiles were based on the CDC/NCHS Year 2000 Body Mass Index (BMI) Reference.

Percentage of Overweight¹ and Obese² Children by Age Group and by Year (2005 – 2008)

Source: North Carolina-NPASS 2008³



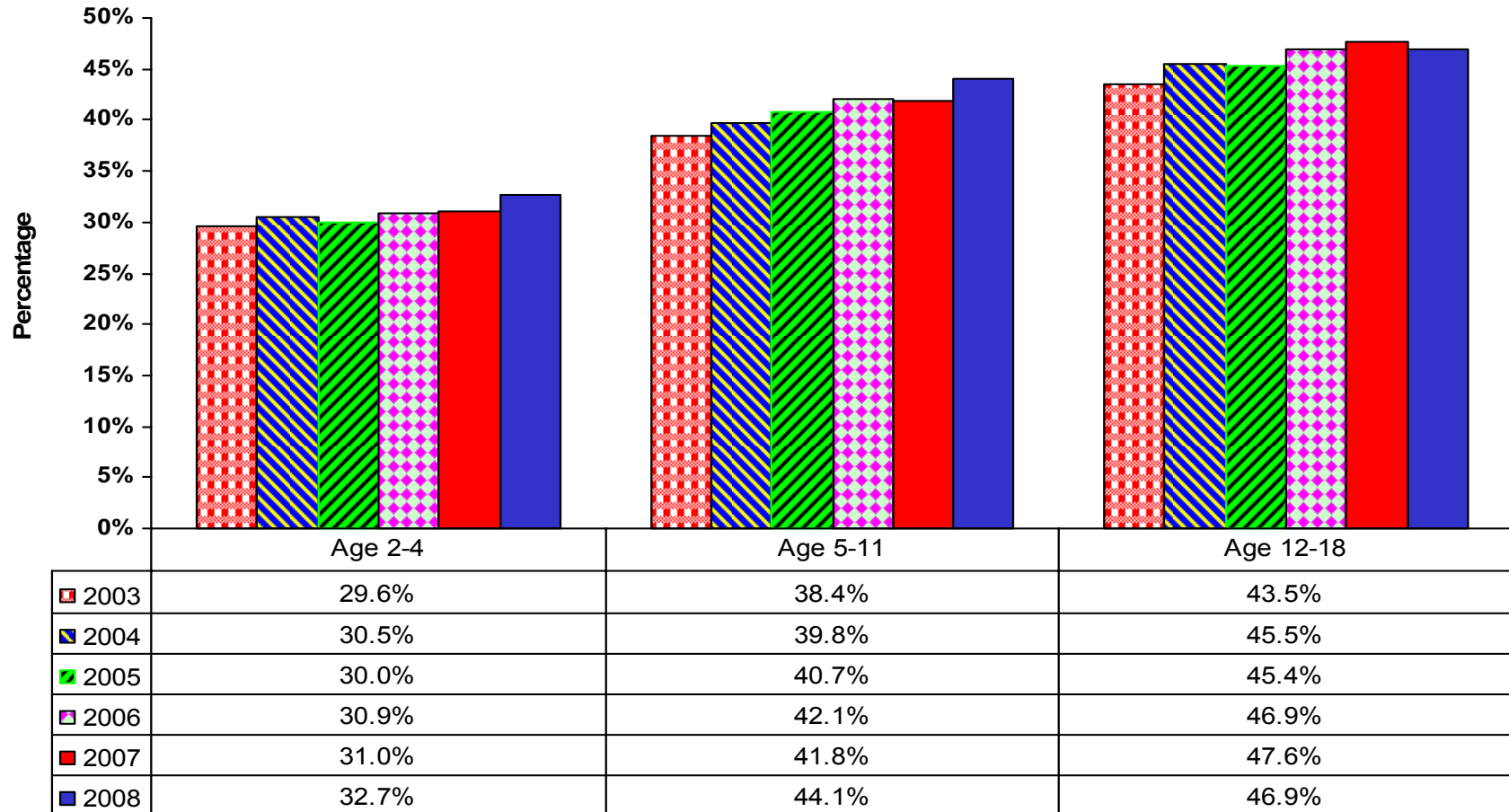
(1) BMI-for-Age Percentiles ≥85th and <95th Percentile

(2) BMI-for-Age Percentiles ≥95th Percentile

(3) North Carolina-Nutrition and Physical Activity Surveillance System (NC-NPASS) is limited to data on children seen in North Carolina Public Health Sponsored WIC and Child Health Clinics and some School Based Health Centers. Percentiles were based on the CDC/NCHS Year 2000 Body Mass Index (BMI) Reference.

Percentage of Obese¹ and Overweight² Children (combined) by Age Group and by Year (2003 – 2008)

Source: North Carolina-NPASS 2008³



(1) BMI-for-Age Percentiles ≥ 95 th Percentile

(2) BMI-for-Age Percentiles ≥ 85 th and < 95 th Percentile

(3) North Carolina-Nutrition and Physical Activity Surveillance System (NC-NPASS) is limited to data on children seen in North Carolina Public Health Sponsored WIC and Child Health Clinics and some School Based Health Centers. Percentiles were based on the CDC/NCHS Year 2000 Body Mass Index (BMI) Reference.